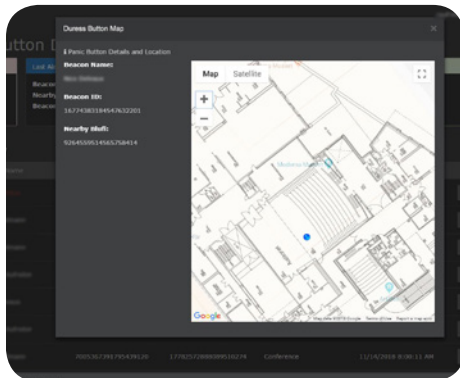


BEEKs™ Duress Badge Beacons



PERSONAL BLE BEACONS WITH ALERT BUTTON FOR LOCATION SERVICES AND WORKPLACE OPTIMIZATION

- **Secure** – Built-in duress call button will raise an alert when pressed indicating the badge location, ID and nearest BluFi.
- **Multi-Purpose** – Use as BLE Beacon or in combination with any passive access card credential.
- **Rapid Implementation** – Gather real-time location data for workplace optimization or mustering.

BEEKs™ Bluetooth Low-Energy (BLE) beacons are among the most advanced beacon badges in the industry. Worn as badges they can provide valuable insights on workplace utilization or help ensuring everyone is safely out of a building in emergency situations.

When combined with HID Global's end-to-end IoT ecosystem, that includes BluFi™ BLE to WiFi gateways and the Bluzone™ cloud services, BEEKs can be centrally managed through the cloud to transfer new messages, firmware updates and battery status checks remotely. Their unique design allows BEEKs to broadcast reliably even in densely populated WiFi environments.

When the button on the backside of the BEEKs Button Badge is pressed, it will send an alert to the Bluzone Cloud (when in range of a connected BluFi). It can trigger several reactions like: e-mail as part of policy; alert to screen and alert to report or API call to activate / present an alert on custom dashboard or customer's legacy systems. This is

typically used for distress or notification signals by the wearer of the badge.

The duress badge is designed to hold a personalized ISO card (with optional RFID) in horizontal format.

BEEKs BLE beacons are available in multiple form factors and sensor configurations for different applications like Real-time Location (RTLS) for assets, condition monitoring of motorized equipment or retail use cases to interact with smartphones in an Apple iBeacon or Google Eddystone compatible format.

The extensible architecture allows organizations to scale deployments of standard beacon applications and extend to centralized management, real-time condition monitoring or location services in a later phase.

TECHNOLOGY HIGHLIGHTS:

- Bluetooth Smart 4.1 compliant beacons
- iBeacon (Apple), Eddystone (Google) and sBeacon (Bluision) supported simultaneously
- Location precision down to 6 ft (2 m)
- Central management possible
- Fast and easy roll-out
- Optional combination with any passive credential in ISO card format
- Call button, raising alert when pressed
- Usage options:
 - Personalized (locating individuals) or
 - Anonymously (utilization reports)

APPLICATION AREAS:

Workplace Optimization (requires Bluzone™ cloud)

- Optimize room occupancy
- Comply to health & safety regulations
- Adjust environmental building conditions based on room utilization


Real-time location for assets (requires Bluzone™ cloud)

- Quickly locate individuals or assets in an office or campus
- Position based alerting, heat-maps etc.
- Alert location function when the badge duressbutton is pressed

Emergency Mustering Requires Bluzone™ Cloud

- Quick and efficient counting of people at mustering points in emergency situations
- Central provisioning or monitoring via BluFi and Bluzone optionally possible

SPECIFICATIONS

BEEKs	
Duress Badge	
	
Base Model Number	BVBBN4B
ELECTRONIC	
Bluetooth communication	Bluetooth Low Energy 4.1, 2.4 GHz ISM
BLE Protocols	Eddystone, iBeacon, sBeacon
Sensitivity	-97dBm
Transmission power	-40dBm to +5dBm (-3 m to -150 m line of sight range)
Processor type	ARM Cortex M3 and M0
Data rates	1Mbit/s / 2Mbit/s
Memory	55KB Flash
Sensors	Accelerometer (for energy saving)
Special Features	Duress alert button + LED
PHYSICAL	
Length x Width	2.5 in x 3.5 in x 0.19 in (64 mm x 89 mm x 5 mm)
Mounting Method	Clip
Housing Material	Polycarbonate and ABS
Color	White + transparent frame
Weight	0.85 oz (24 g)
BATTERY	
Type	Six CR2016, rated at 90 mAh each. Total 540mAh
Life	RTLS mode, dynamically advertisement when walking adv every 500ms and when no motion adv every 5000ms: 2 years
CHEMICAL AND MECHANICAL RESISTANCE	
Water	IP67, 68° F (20° C), 3.3 ft (1 m) x 1 h
Withstands Exposure To	Water and UV resistant
THERMAL	
Storage	-4° to +170° F (-20° to +77° C)
Operating Temperature	-4° to +170° F (-20° to +77° C)
OTHER	
Standards	FCC / CE; BLE
Options	Possible reactions to button press : 1. email as part of policy; 2. alert to screen and to alert report 3.API call to activate / present alert on custom dashboard or customers legacy systems.
Box Size	10 pcs.
Warranty	1 year

